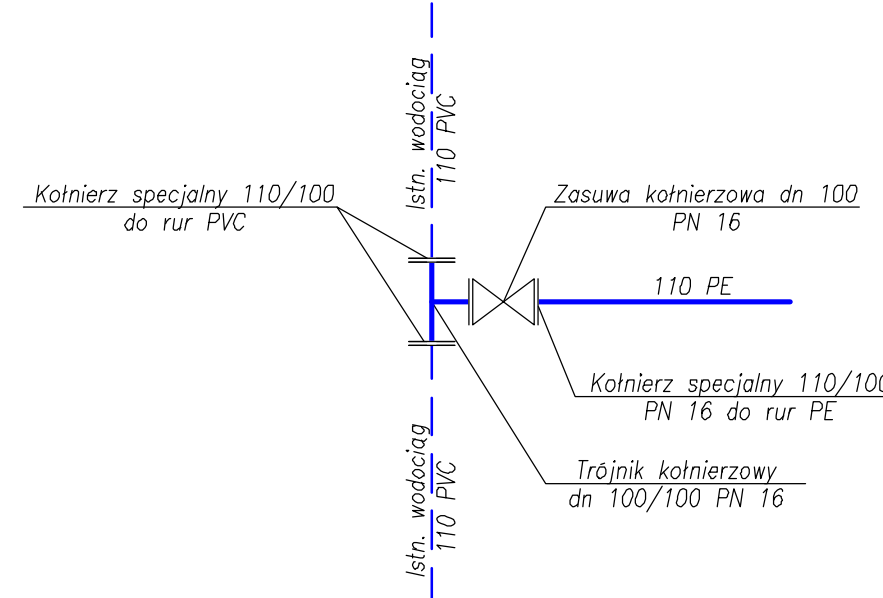
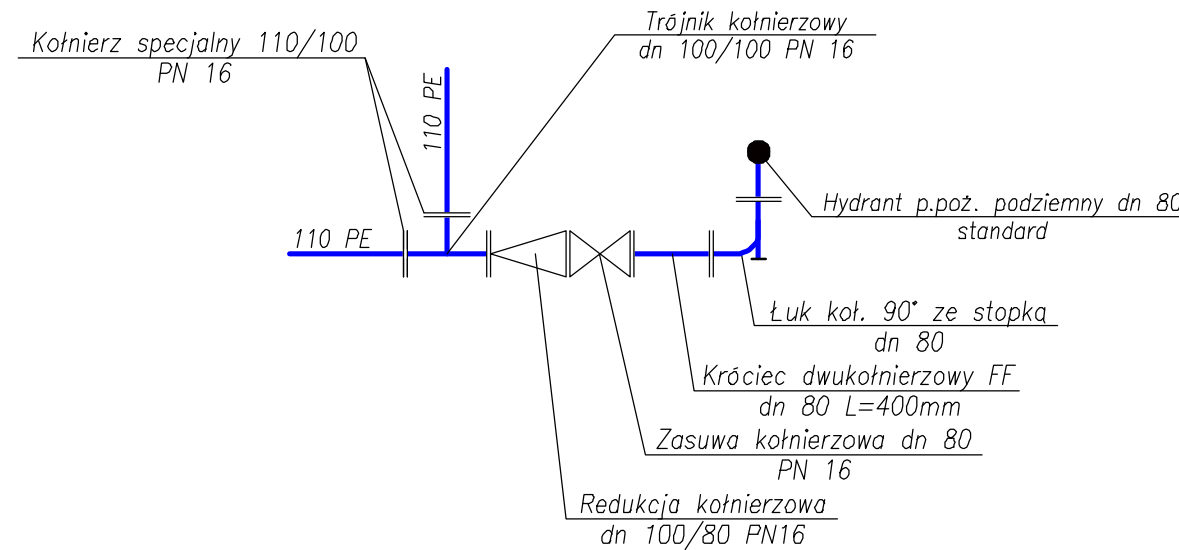


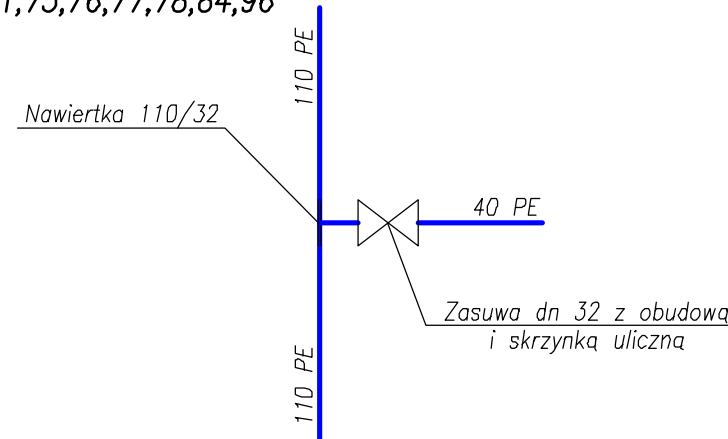
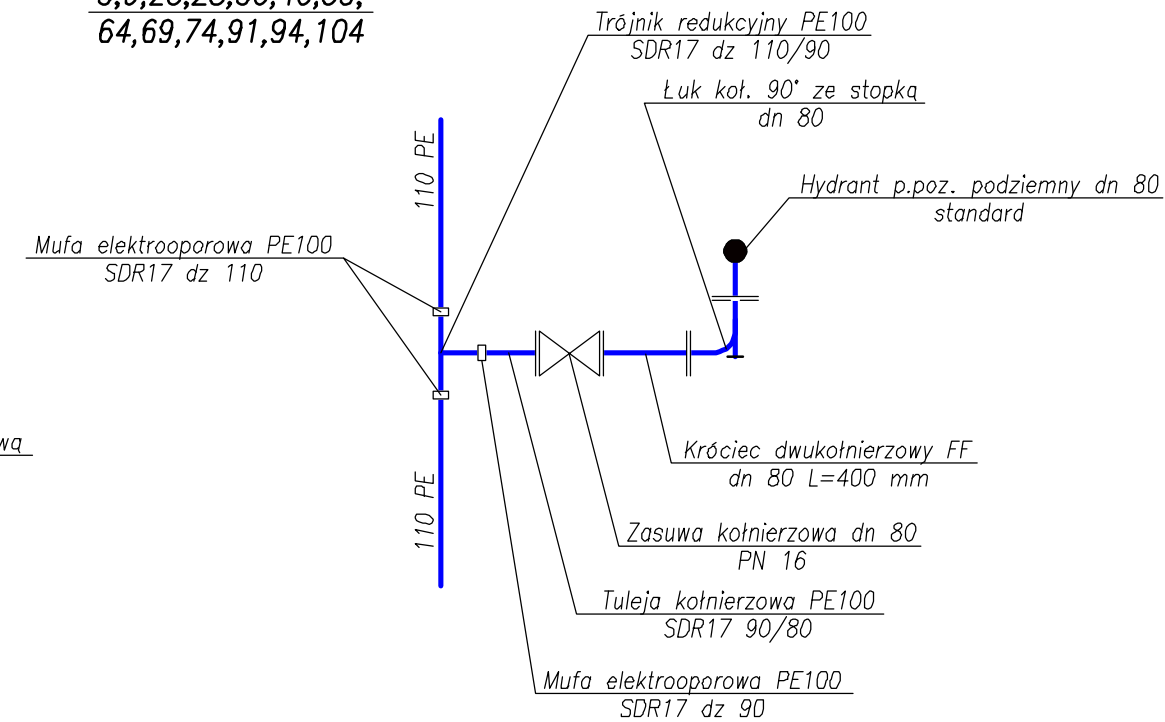
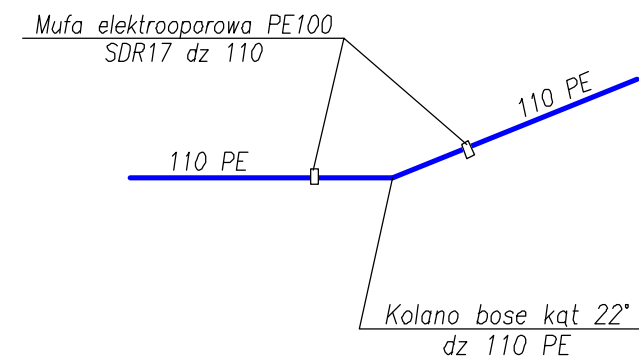
## Schematy węzłów wodociągowych

$$\frac{1, 13, 34, 48, 61,}{67, 81, 97, 98, 106}$$


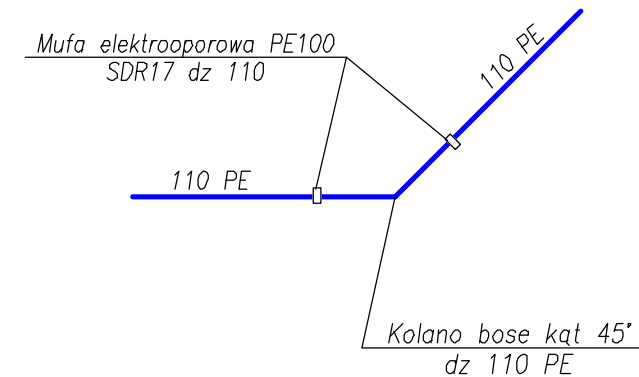
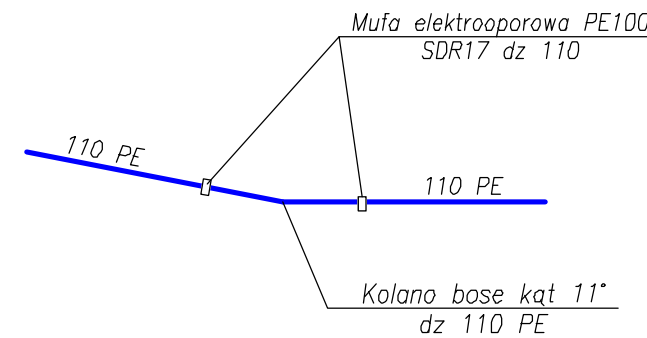
2



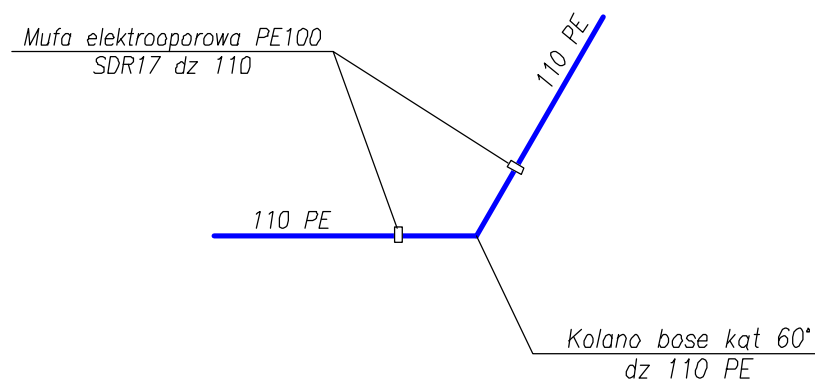
3,4,6,7,8,10,11,12/1,12/2,15,  
16,17,18,19,21,22,23,24,25,26,  
27,29,30,31,32,39,41,42,43,44,  
45,46,50,51,52,54,55,56,57,58,  
63,65,70,71,75,76,77,78,84,96


$$\frac{5, 9, 20, 28, 36, 40, 53,}{64, 69, 74, 91, 94, 104}$$

$$\frac{12,59,66,}{72,73,103}$$


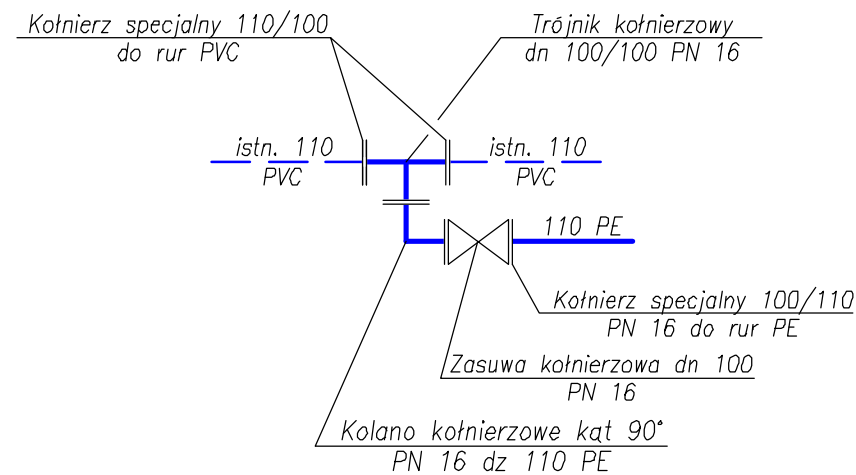
14,35,79,85,102


$$\frac{33,37,38,47,}{59,93,105}$$


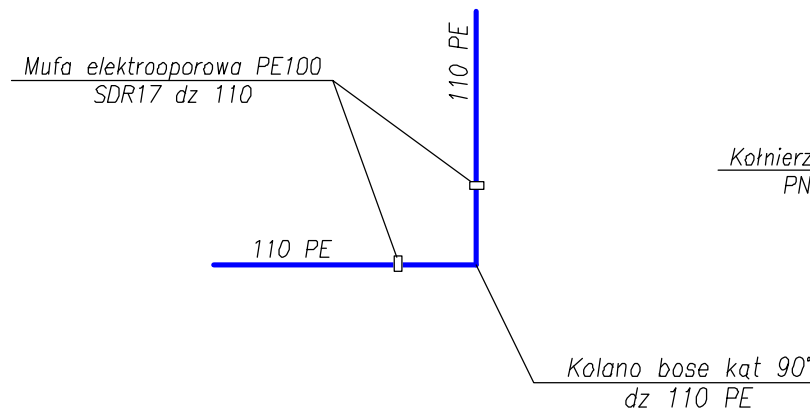
49,62,68,82



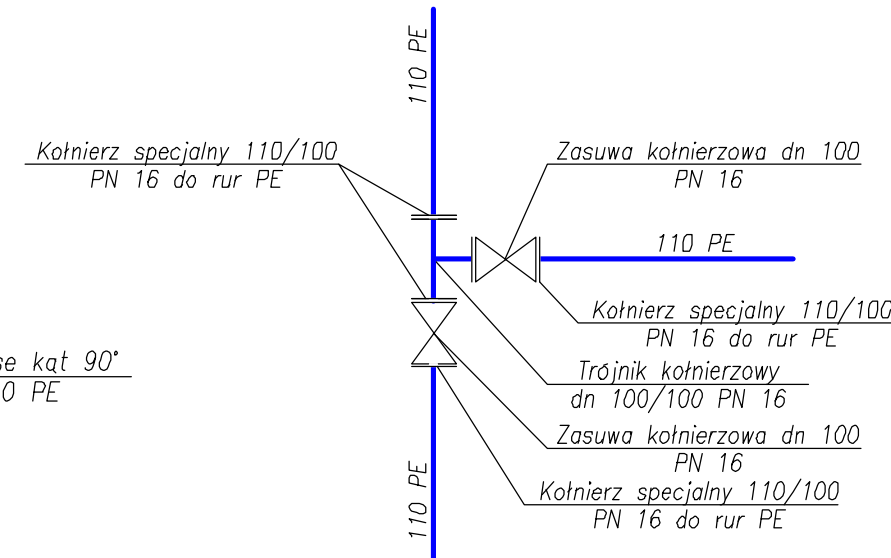
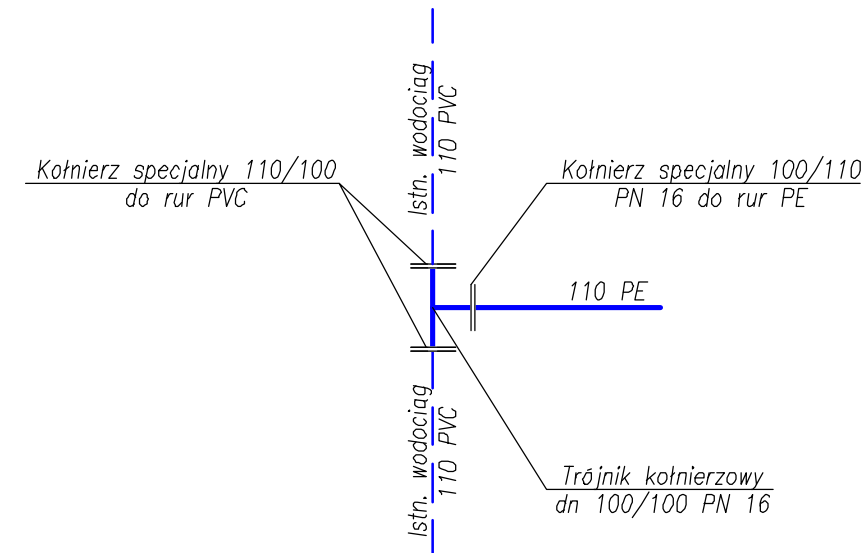
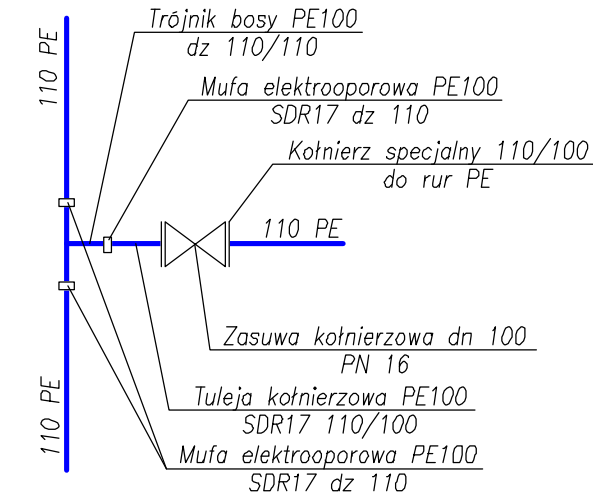
86-87



87a, 107



88


$$\frac{90,91a,92,93,}{95,99,101}$$


 <b>PROBUD</b> <b>PRACOWNIA PROJEKTOWA</b> KALISZ Al.Wołności 12 tel.0-62-7643160 E-mail: zpu_probud@onet.pl	<b>TRESC</b> Schematy węzłów wodociagowych - ETAP II		<b>STADIUM</b> <b>P.W.</b>
	<b>OBJEKT</b> Budowa sieci z przyłączami zbiorowego zaoprtżenia w wodę i odprowadzenia ścieków sanit.		<b>SKALA</b>  <b>DATA</b> <b>11.16r.</b>
<b>specjalnośc</b>	<b>imie i nazwisko</b>	<b>nr upr.</b>	<b>podpis</b>
Inst. sanit.	Projektant: Andrzej Błaszczczyński	UAN 7342/66/93	<b>NR KYSUNKU</b> 
Inst. sanit.	Sprawdzający: inż. Tomasz Samir	GT 8388/170/77	
<b>BRANZA</b> <b>Sanitarna</b>		<b>ADRES</b> <b>TOMASZÓW MAZ.</b>	